



NEWSLETTER NO. 5

May 2026



COMHAIRLE CONTAE AN CHLÁIR
CLARE COUNTY COUNCIL



OPW Óifig na n-Obairacha Poiblí
Office of Public Works

Tionscadal Éireann
Project Ireland
2040



Introduction

Kilkee is a popular seaside resort town located beside Moore Bay on the west coast of County Clare. Two streams flow through the town: the Atlantic Stream to the north and the Victoria Stream to the south. Due to tidal influences and rainfall events, Kilkee is vulnerable to both coastal flooding and fluvial flooding from these watercourses.

Flooding has occurred on several occasions, particularly where the Victoria Stream and Well Stream overflow their banks along sections of Carrigaholt Road and Well Road, affecting nearby properties. The Atlantic Stream has also caused flooding in the Waterworld area, with floodwater occasionally reaching the promenade and beach.

To address these risks, Clare County Council, in partnership with the Office of Public Works (OPW), appointed JBA Consulting in 2019 to develop a sustainable flood relief scheme. Planning permission to progress the fluvial elements of the scheme was granted by An Coimisiún Pleanála on 20th August 2025.

The scheme design for Kilkee consists of the construction of new flood defence walls, embankments, box culverts and open channels along the Victoria Stream and Well Stream, combined with a channel diversion and the creation of flood water storage areas along the Victoria and Tributary Streams.



Contact Us:

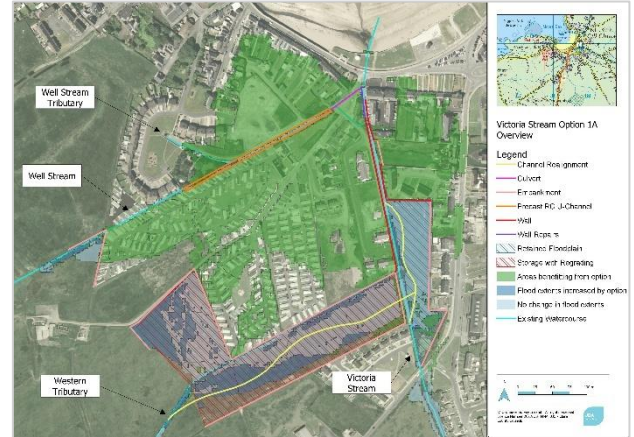
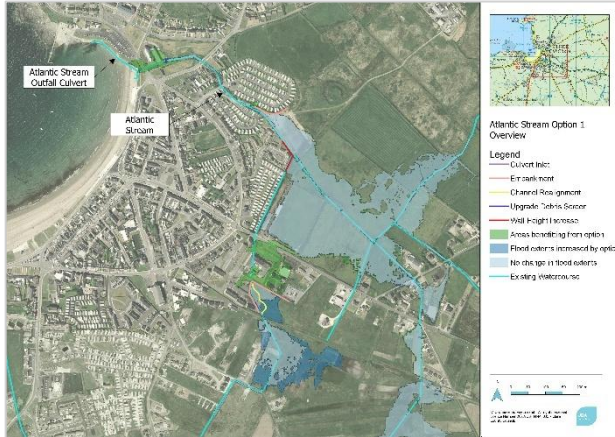
You can keep in touch with the project team through our website, or via Facebook where we will be posting updates on progress and details of works that are ongoing.

JBA Consulting
Unit 24 Grove Island,
Corbally, Limerick

061 579400
info@kilkeefrs.ie

www.kilkeefrs.ie
Kilkee FRS

Work Completed Since Then (Sep-2025 to Feb-2026)



Proposed Measures in Atlantic Scheme Catchment (The above maps and further information are available on www.kilkeefrs.ie)

Proposed Measures in Victoria Scheme Catchment

Since the granting of planning permission in August 2025, progress on Stage 3 of the Kilkee Flood Relief Scheme has focused on preparatory and investigation works. Tenders for the detailed design surveys (GPR, CCTV, and manhole inspections) have been issued and evaluated. Topographic surveys have commenced on site. Public and landowner consultation continue to be carried out as part of the Compulsory Purchase Order (CPO) process.

Next Steps

Detailed Design & Tender: Commenced.

Geophysical & Archaeological Surveys:

Geophysical Surveys have been completed. Intrusive archaeological surveys will be undertaken in Q2 2026.

Detailed Design Surveys: Topographical surveys, GPR, manhole inspections, CCTV surveys, and site investigations will be undertaken in Q2/3 2026.

Landowner Engagement: Ongoing engagement with impacted landowners will continue.

CPO Application: CPO application to be submitted to An Coimisiún Pleanála.

Stages

Stage 1 – Scheme Development

Stage 2 – Public Exhibition and Planning Approval

(Planning permission granted by An Coimisiún Pleanála on 20 August 2025)

Stage 3 – Detailed Design and Tender

(Commenced following planning approval)

Stage 4 – Construction

(Estimated to commence in Q4 2027 and last approximately 18 months)

Stage 5 – Handover

Project Programme

